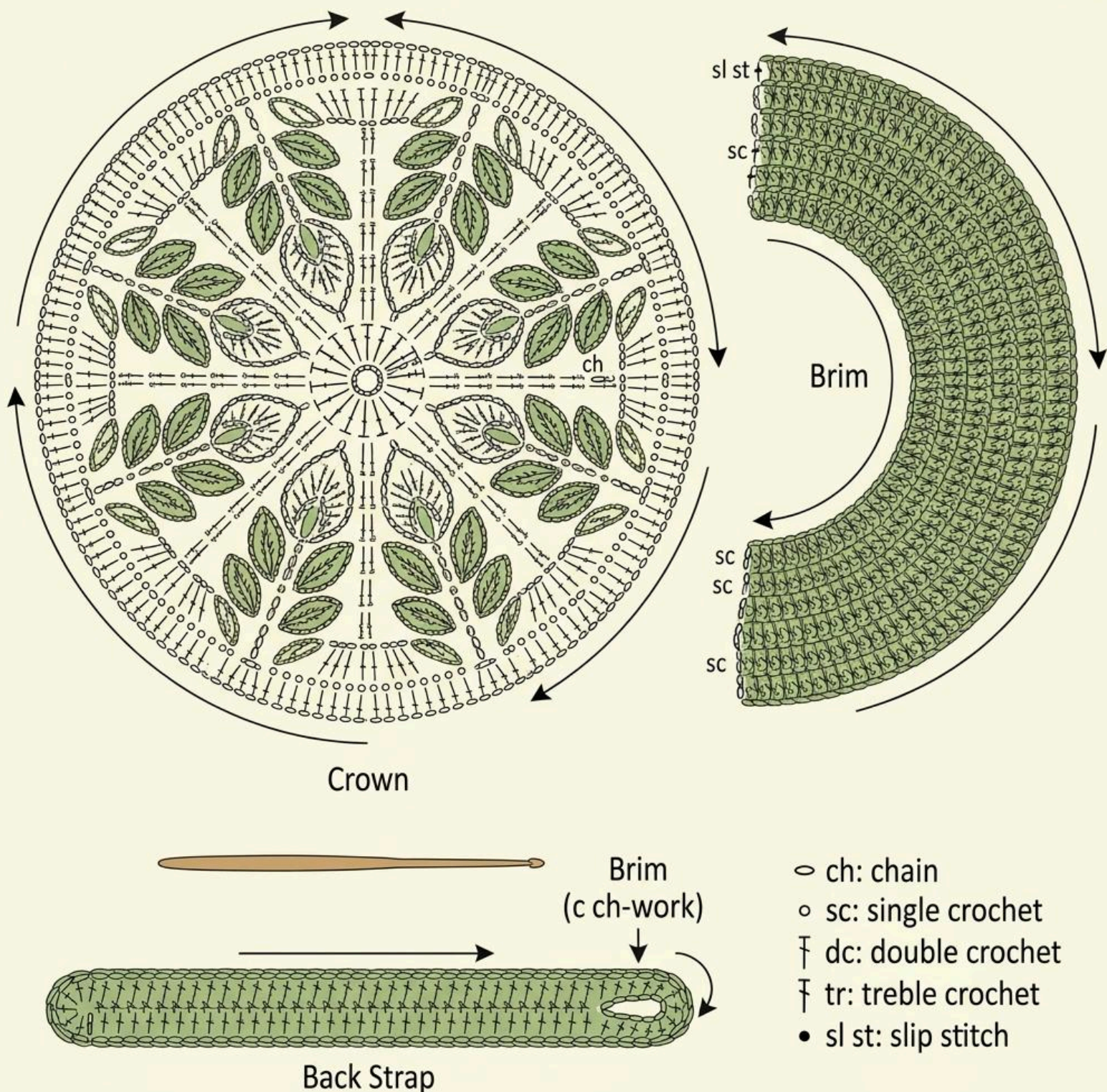


- <https://handcrafted.craftsforlove.com/> SEE THE BEST PATTERNS

Leaf Pattern Crochet Baseball Cap (Original Design)

Create a beautiful handmade baseball cap featuring an elegant leaf motif and a comfortable curved brim. This original crochet pattern is designed using US crochet terms and includes detailed instructions to guide you from the first stitch to the final finishing touches. Whether you're an adventurous beginner or an experienced crocheter, this project is enjoyable and rewarding.



- <https://handcrafted.craftsforlove.com/> SEE THE BEST PATTERNS

Materials

- Worsted Weight Yarn (Category 4) – 180–220 yards
- 4.5 mm (G/7) crochet hook
- 5.0 mm (H/8) crochet hook (optional for a looser brim)
- Stitch markers
- Yarn needle
- Scissors
- Flexible plastic brim insert (optional)
- Measuring tape

Finished Size

Adult Women's Size

- Head Circumference: 21–23 inches (53–58 cm)
- Crown Diameter: Approximately 6.5 inches
- Hat Depth: Approximately 6 inches
- Brim Width: Approximately 2.75 inches

Gauge

16 dc × 8 rows = 4 × 4 inches (10 × 10 cm)

Checking your gauge helps ensure your finished cap fits correctly.

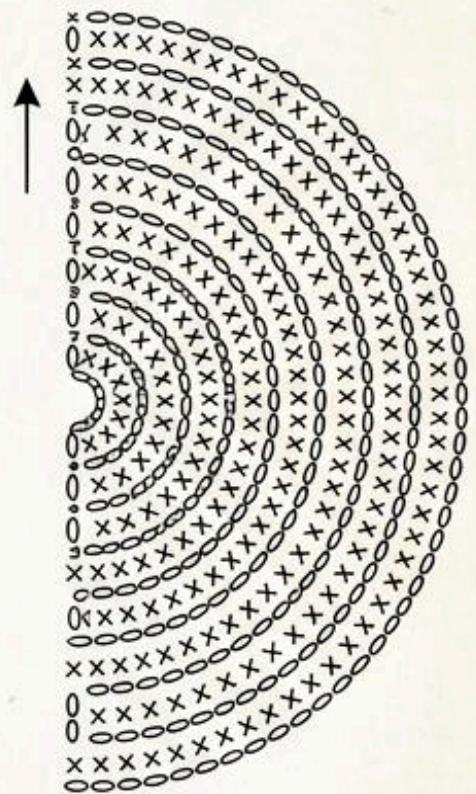
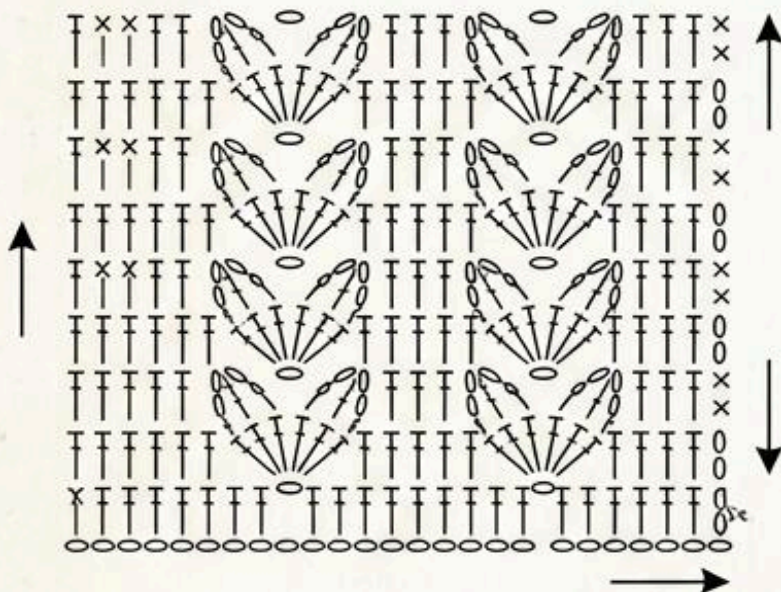
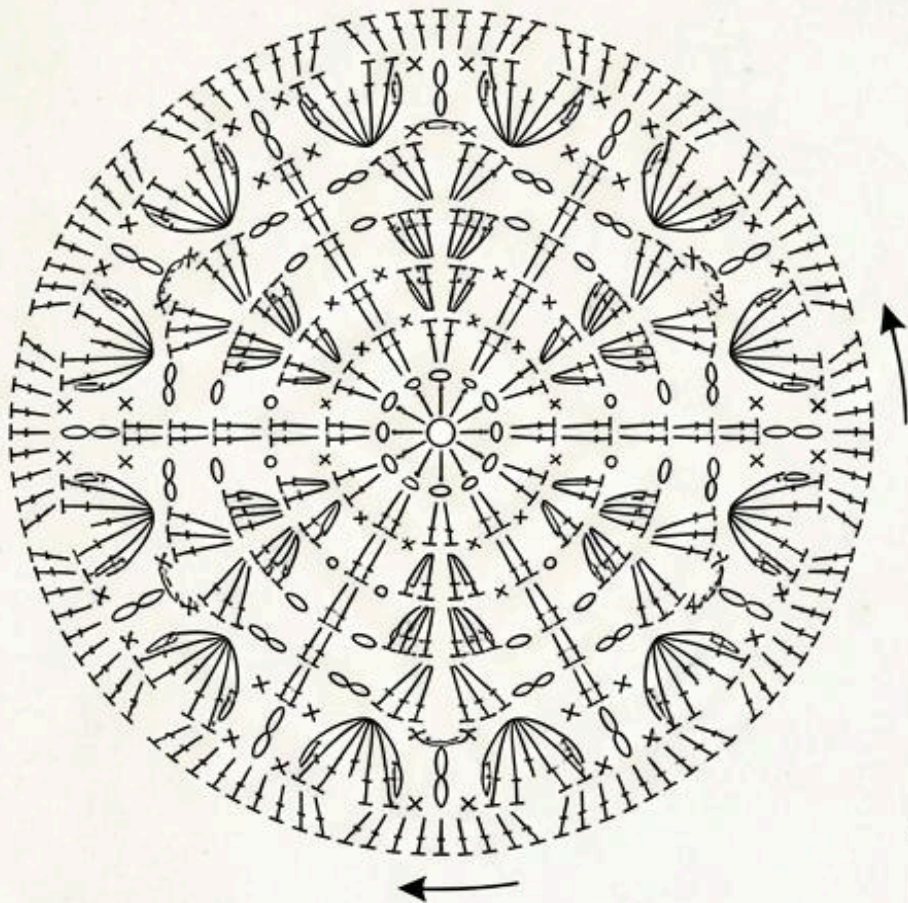
Skill Level

Intermediate

You should already know how to:

- Make a magic ring
- Chain
- Slip stitch
- Single crochet
- Half double crochet
- Double crochet
- Increase
- Work in rounds
- Work in front loops and back loops

Leaf Pattern Crochet Baseball Cap Diagram - US Terms



KEY:

x - single crochet (sc) T - double crochet (dc) o - chain (ch) ~ - slip stitch (sl st)

- <https://handcrafted.craftsforlove.com/> SEE THE BEST PATTERNS

Crochet Abbreviations (US Terms)

- ch – chain
- sl st – slip stitch
- sc – single crochet
- hdc – half double crochet
- dc – double crochet
- tr – treble crochet
- st – stitch
- sp – space
- rep – repeat
- sk – skip
- inc – increase
- BLO – back loop only
- FLO – front loop only

Notes

- The hat is worked from the top down.
- Do not turn your work unless instructed.
- Join each round with a slip stitch.
- Chain stitches at the beginning of a round do not count as stitches unless noted.
- Place a stitch marker at the beginning of each round.

Round 1 – Crown Center

Make a magic ring.

Ch 2.

Work 12 dc into the ring.

Pull the ring closed.

Join with a sl st to the first dc.

You should have 12 stitches.

Round 2

Ch 2.

Work 2 dc in each stitch around.

Join with a sl st.

24 stitches.

- <https://handcrafted.craftsforlove.com/> SEE THE BEST PATTERNS

The crown should remain perfectly flat.

Round 3

Ch 2.

1 dc in the next stitch, 2 dc in the following stitch.

Repeat around.

Join.

36 stitches.

Round 4

Ch 2.

1 dc in each of the next 2 stitches, 2 dc in the next stitch.

Repeat around.

Join.

48 stitches.

Your circle should still lay completely flat without curling or rippling.

Round 5

Ch 2.

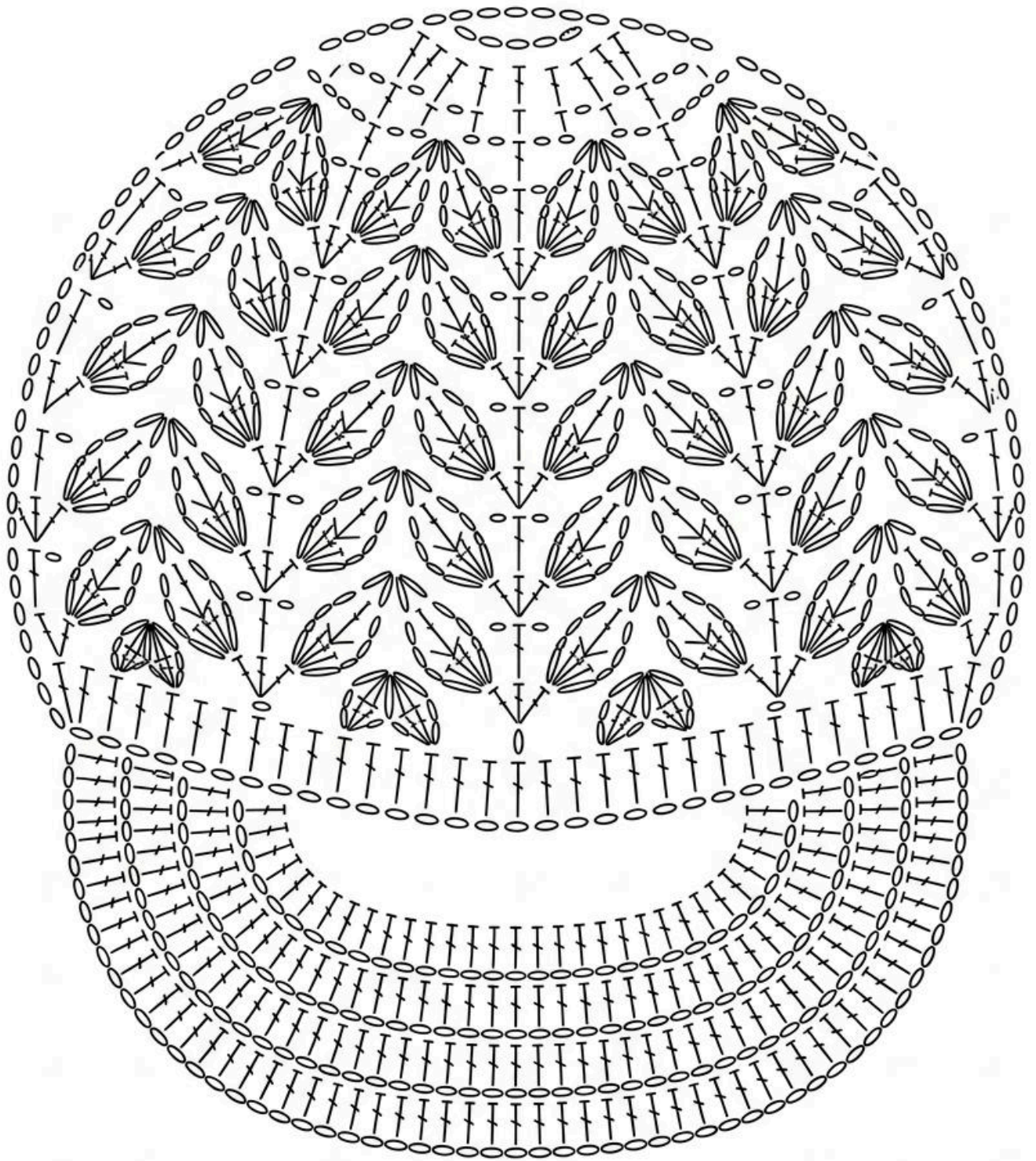
1 dc in each of the next 3 stitches, 2 dc in the next stitch.

Repeat around.

Join.

60 stitches.

- <https://handcrafted.craftsforlove.com/> SEE THE BEST PATTERNS



○ = ch † = sc † = dc † = dtr †† = dtr † = sc †† = BLO

- <https://handcrafted.craftsforlove.com/> SEE THE BEST PATTERNS

Round 6

Ch 2.

1 dc in each of the next 4 stitches, 2 dc in the next stitch.

Repeat around.

Join.

72 stitches.

The crown should now measure approximately 6–6½ inches across.

Creating the Leaf Motif

The decorative leaf design is worked between columns of double crochet.

Each leaf is formed using a combination of chain spaces and fan stitches that gradually increase and then decrease to create a pointed leaf shape.

Leaf Foundation

Work:

- dc in next stitch
- ch 2
- skip 2 stitches
- dc in next stitch

Repeat around.

Join with a slip stitch.

Leaf Round 1

Into each chain-2 space work:

- (2 dc, ch 2, 2 dc)

Work 1 dc into each stitch between leaf groups.

Repeat around.

Join.

The first leaf shapes will begin to appear.

- <https://handcrafted.craftsforlove.com/> SEE THE BEST PATTERNS

Leaf Round 2

Continue building each leaf by working:

- 3 dc
- ch 2
- 3 dc

inside each previous leaf space.

Maintain one column of dc between each motif.

Your leaves will begin opening outward.

Leaf Round 3

Increase each leaf by adding one additional double crochet to both sides.

Each leaf should now appear wider with a rounded base.

Keep the spacing identical around the hat.

Hat Body

Once the crown reaches the desired diameter, stop increasing.

Continue working evenly without increases.

Alternate one plain round of double crochet with one decorative leaf round.

Repeat until the hat measures approximately 6 inches from the crown center.

Try the cap on occasionally.

The lower edge should rest just above your ears.

Brim Foundation

Fold the hat in half to identify the front center.

Place stitch markers approximately 22 stitches apart.

The stitches between these markers become the brim.

- <https://handcrafted.craftsforlove.com/> SEE THE BEST PATTERNS

Brim Row 1

Attach yarn at one marker.

Ch 1.

Work one sc in each stitch across.

Turn.

Brim Row 2

Ch 1.

Work one hdc in each stitch.

Turn.

Brim Row 3

Work one hdc in each stitch.

Increase once at each end.

Turn.

Continue the Brim

Repeat the previous row while increasing at both ends every second row until the brim measures approximately 2¾ inches from the hat.

The brim should naturally form a gentle curve.

If desired, insert a flexible plastic brim between two matching crochet pieces before joining them together.

Edging

Work one complete round of single crochet around the entire hat, including the brim.

This creates a neat and durable finish.

Finishing

Fasten off.

- <https://handcrafted.craftsforlove.com/> SEE THE BEST PATTERNS

Weave in every loose end securely.

Lightly steam block the hat if needed.

Allow it to dry completely before wearing.

Customizing Your Cap ✨

- Add a wooden button on one side.
- Embroider leaf veins using contrasting yarn.
- Sew on a handmade leather label.
- Use cotton yarn for summer wear.
- Choose wool blends for cooler weather.
- Add a ponytail opening at the back.
- Create stripes by changing colors every two rounds.

Care Instructions

- Hand wash in cool water.
- Use mild detergent.
- Do not wring.
- Reshape while damp.
- Lay flat to dry.
- Avoid high heat.

Congratulations! 🎉

Your original Leaf Pattern Crochet Baseball Cap is now complete. With its textured leaf motifs, comfortable fit, and classic curved brim, this stylish accessory is perfect for everyday wear. Experiment with different yarn colors and embellishments to make each cap uniquely your own. Happy crocheting! 🌿🧶