

- <https://handcrafted.craftsforlove.com/> SEE THE BEST PATTERNS

Fabric Horse Quilt Block Tutorial

Create a beautiful patchwork horse quilt block using the exact pattern layout and measurements shown in the chart. This tutorial is designed for beginners and experienced quilters alike, with detailed instructions that guide you through every stage of the process—from preparing your fabrics to finishing your completed horse block.

Finished Project Overview

This horse quilt block is made from multiple fabric pieces that are sewn together to create a stylized horse silhouette with a flowing mane and patchwork body.

The design includes:

- Body pieces
- Mane pieces
- Leg pieces
- Hoof pieces
- Tail pieces
- Neck and head sections

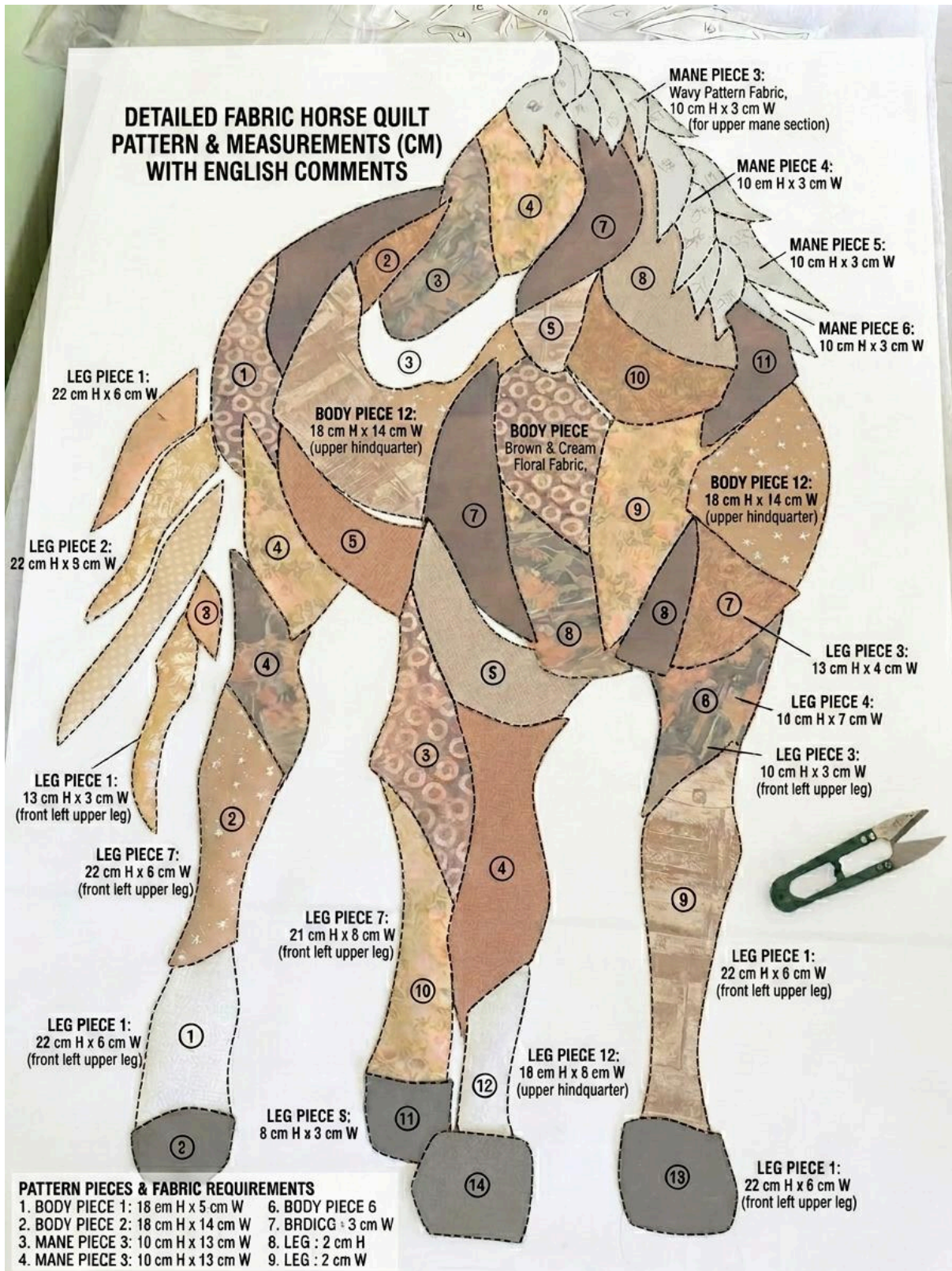
The finished block can be used for:

- Wall hangings
- Baby quilts
- Throw quilts
- Horse-themed décor
- Equine gifts
- Cushion covers
- Tote bag panels

Skill Level

Intermediate

A confident beginner can also complete this project by carefully following the steps and sewing slowly.



- <https://handcrafted.craftsforlove.com/> SEE THE BEST PATTERNS

Materials Needed

Fabrics

Choose quilting cotton fabrics in coordinating colors and prints.

Recommended:

- 12–20 different fabric prints for a scrappy patchwork look
- Solid fabrics for contrast
- Neutral background fabric

Fabric Amount

For one horse block:

- Assorted scraps for pattern pieces
- Approximately ½ yard background fabric
- Lightweight fusible web (optional)

Tools

- Fabric scissors
- Rotary cutter
- Cutting mat
- Quilting ruler
- Fabric marking pen
- Iron
- Ironing board
- Sewing machine
- Matching thread
- Pins or fabric clips
- Printed horse pattern

Understanding the Pattern Pieces

Before cutting fabric, identify all pattern sections shown on the template.

Body Pieces

Body Piece 1 – 18 cm H × 5 cm W

Body Piece 2 – 18 cm H × 14 cm W

Body Piece 3 – 3 cm

Body Piece 4

- <https://handcrafted.craftsforlove.com/> SEE THE BEST PATTERNS

Body Piece 5

Body Piece 6

Additional numbered body sections shown throughout the horse.

Mane Pieces

Mane Piece 1 – 10 cm H × 13 cm W

Mane Piece 2 – 10 cm H × 3 cm W

Mane Piece 3 – 10 cm H × 13 cm W

Mane Piece 4 – 10 cm H × 3 cm W

Mane Piece 5 – 10 cm H × 3 cm W

Mane Piece 6 – 10 cm H × 3 cm W

Leg Pieces

Various leg sections ranging from:

- 8 cm × 3 cm
- 10 cm × 3 cm
- 13 cm × 4 cm
- 18 cm × 6 cm
- 21 cm × 8 cm
- 22 cm × 6 cm

Hoof Pieces

The bottom gray sections numbered 13 and 14.

Tail Pieces

The tail consists of multiple narrow sections attached behind the horse.

Print and Prepare the Pattern

Print the horse pattern at 100% scale.

Do not use "Fit to Page" or automatic scaling.

Verify measurements using a ruler to ensure the printed dimensions match the chart.

Carefully cut out every numbered piece.

- <https://handcrafted.craftsforlove.com/> SEE THE BEST PATTERNS

Keep the pieces organized in separate groups:

- Mane
- Body
- Legs
- Tail
- Hooves

Label the back of each piece if necessary.

Add Seam Allowances

The measurements shown on the chart represent the actual pattern shapes.

Add a ¼-inch (6 mm) seam allowance around every piece before cutting fabric.

This is important for accurate assembly.

You can:

- Trace each piece onto template plastic
- Add seam allowance around the edge
- Cut the template
- Use it repeatedly

Choose Your Fabric Placement

Before cutting, arrange fabrics to create visual contrast.

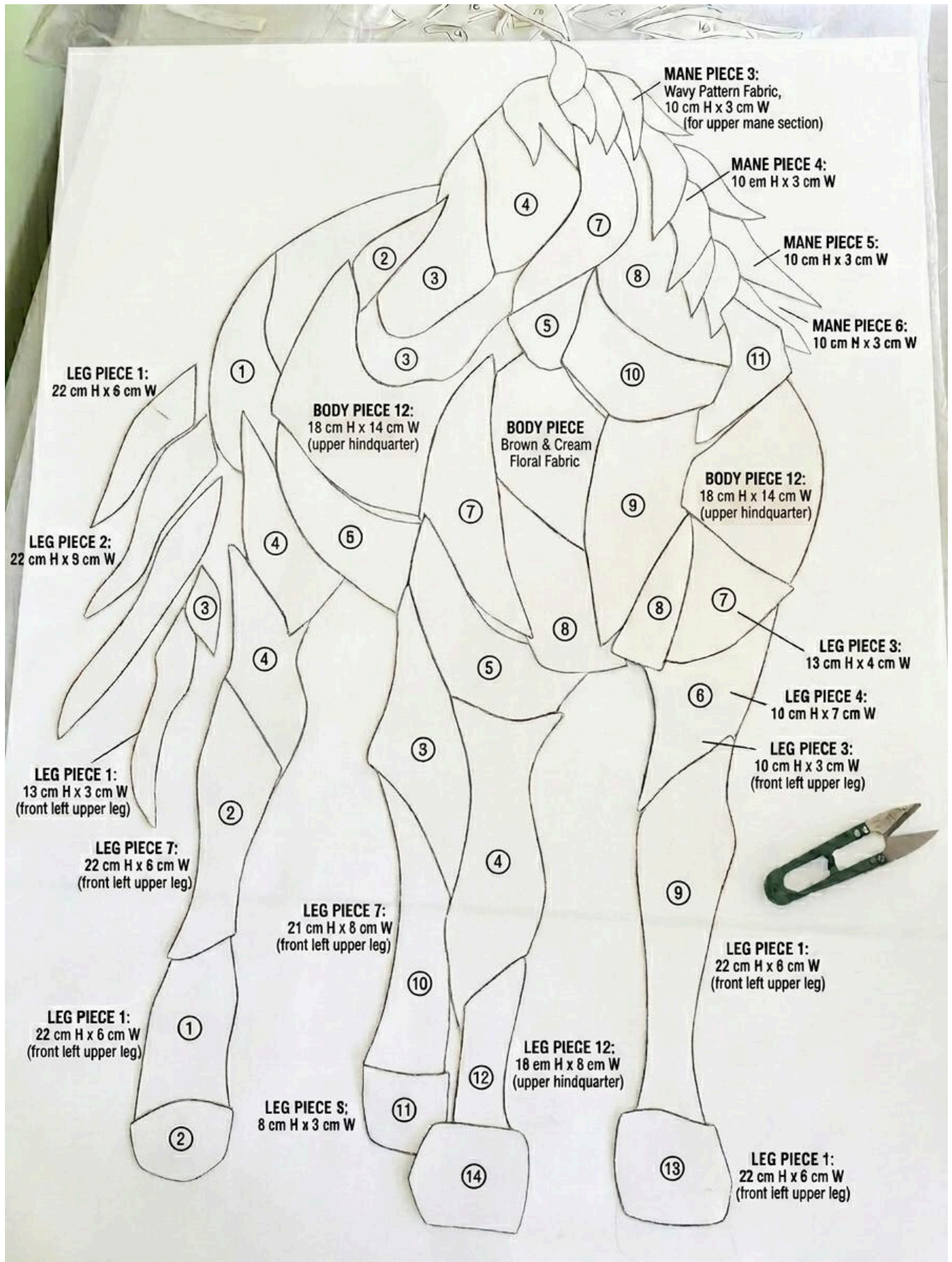
For example:

Mane

Use:

- Light florals
- Medium prints
- Dark solids

Alternating colors helps define individual mane sections.



- <https://handcrafted.craftsforlove.com/> SEE THE BEST PATTERNS

Body

Mix:

- Florals
- Tone-on-tone prints
- Geometric prints
- Textured solids

Legs

Use a variety of coordinating fabrics while maintaining contrast between adjacent sections.

Hooves

Dark gray, charcoal, black, or brown fabrics work best.

Trace the Pieces onto Fabric

Place each template on the wrong side of the fabric.

Trace around the template.

Add seam allowances if not already included.

Cut carefully along the outer line.

Repeat until every numbered piece has been cut.

Keep all pieces labeled.

Organize the Pieces Before Sewing

Lay all cut pieces on a large table exactly as shown in the pattern.

This step is critical.

Verify:

- Piece numbers match
- Colors are balanced
- No pieces are missing
- Directional prints face correctly

Take a photo before sewing.

The photo serves as a reference throughout assembly.

- <https://handcrafted.craftsforlove.com/> SEE THE BEST PATTERNS

Assemble the Head Section

Begin with the horse's head.

Sew adjacent pieces together one pair at a time.

Use:

- Right sides together
- ¼-inch seam allowance

After each seam:

- Press seam open
- Or press toward the darker fabric

Continue until the complete head shape is assembled.

Check the pattern frequently to maintain correct orientation.

Assemble the Mane

The mane contains several separate sections.

Work from one side to the other.

Join:

- Mane Piece 1
- Mane Piece 2
- Mane Piece 3
- Mane Piece 4
- Mane Piece 5
- Mane Piece 6

As additional mane sections connect to neck pieces, sew them according to the pattern layout.

Press after every seam.

Carefully maintain the curved outer silhouette.

Assemble the Neck

The neck is formed by several long body and mane sections.

Sew pieces together gradually.

Avoid stretching bias edges.

- <https://handcrafted.craftsforlove.com/> SEE THE BEST PATTERNS

Pin generously around curves.

Press carefully to preserve shape.

When complete, attach the neck to the head assembly.

Assemble the Front Legs

Construct each front leg separately.

Join the numbered sections from top to bottom.

Finish with the hoof pieces.

Check alignment frequently.

The leg should remain straight and proportional.

Press after every seam.

Assemble the Back Legs

Repeat the same process for the rear legs.

Because some sections are longer and narrower, pin carefully before sewing.

Maintain smooth transitions between pieces.

Attach hoof sections last.

Press thoroughly.

Assemble the Tail

The tail consists of multiple elongated sections.

Sew the sections together according to their numbered positions.

Keep the pointed ends sharp.

Trim excess seam bulk where necessary.

Press carefully.

Assemble the Main Body

Now build the horse's torso.

- <https://handcrafted.craftsforlove.com/> SEE THE BEST PATTERNS

Begin with central pieces.

Add surrounding sections gradually.

Work outward from the center.

This approach helps maintain the correct shape.

After each seam:

- Press
- Check alignment
- Compare to the reference layout

Continue until the entire body section is complete.

Attach the Legs

Position each completed leg beneath the body.

Pin securely.

Sew using a consistent seam allowance.

Press seams toward the body.

Check that the horse remains balanced and symmetrical.

Attach the Tail

Align the tail with the rear body edge.

Pin carefully.

Sew slowly through intersecting seams.

Press the seam flat.

Attach the Head and Neck Assembly

Match the neck section to the body.

Pin around all joining edges.

Sew carefully.

Press the seam.

The horse silhouette should now be fully assembled.

- <https://handcrafted.craftsforlove.com/> SEE THE BEST PATTERNS

Square Up the Block

Place the completed horse block on a cutting mat.

Trim excess fabric around the outer edge.

Leave enough background area if your pattern includes surrounding fabric.

Ensure:

- Straight edges
- Square corners
- Balanced proportions

Add Background Fabric (Optional)

If creating a larger quilt block:

Measure the horse block.

Add background strips around the edges.

Sew:

- Side strips first
- Top and bottom strips second

Press flat.

Square the block again.

Final Pressing

Give the entire block a thorough final press.

Use steam carefully.

Press from the back first.

Then press from the front using a pressing cloth.

The block should lie completely flat.

Turn the Block into a Quilt

You can now incorporate the horse block into:

- Baby quilts

- <https://handcrafted.craftsforlove.com/> SEE THE BEST PATTERNS

- Throw quilts
- Bed quilts
- Wall hangings
- Table runners

Add:

- Batting
- Quilt backing
- Quilting stitches
- Binding

Following standard quilt finishing techniques.

Helpful Tips for Success

- Sew with an accurate ¼-inch seam allowance.
- Keep all pieces labeled until assembly is complete.
- Press after every seam.
- Use plenty of pins around curved sections.
- Photograph your layout before sewing.
- Trim bulky seam intersections.
- Work slowly on narrow mane and tail pieces.
- Maintain strong contrast between neighboring fabrics.
- Check orientation before every seam.
- Square up the block before adding borders.

Finished Result

When completed, you'll have a striking patchwork horse quilt block featuring a flowing mane, detailed legs, textured body sections, and beautiful scrappy fabric placement. The finished design showcases the charm of traditional quilting combined with an artistic equestrian silhouette, making it a standout feature in any quilt or sewing project.