

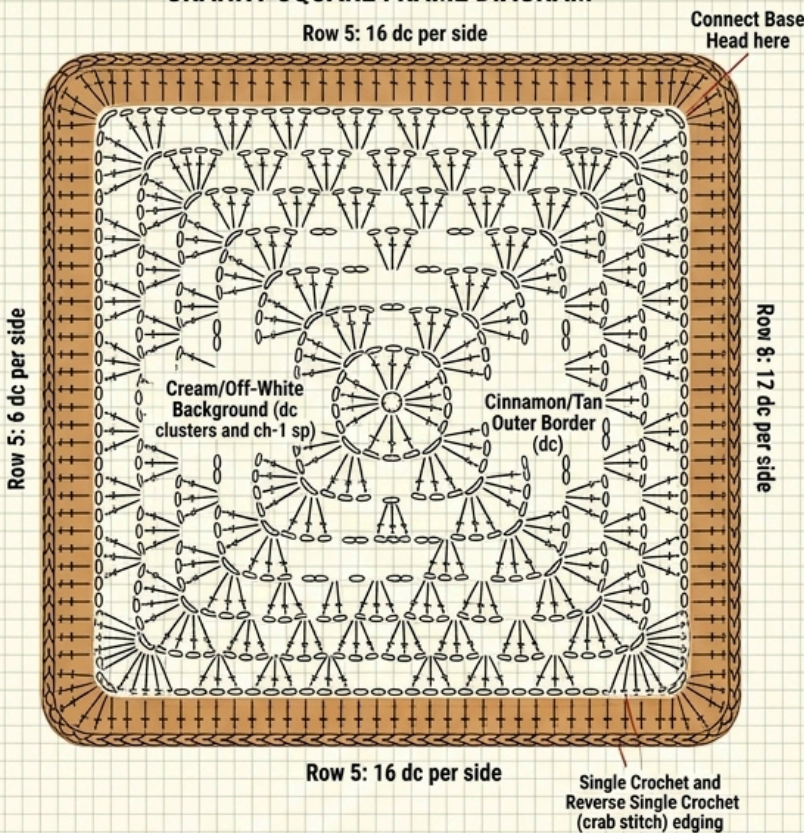
# Crochet Puppy Granny Square – Complete Step-by-Step Tutorial



This tutorial is based on the crochet chart provided and is written to stay as faithful as possible to the original design. The finished piece is a cute puppy face granny square worked from the center outward, including the muzzle, head, ears, and border.

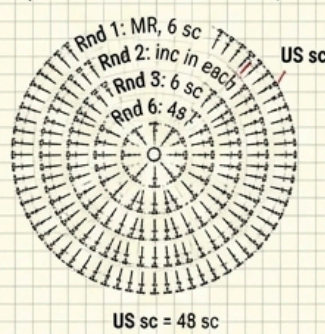
## TECHNICAL CROCHET PATTERN DIAGRAM - 3D DOG HEAD GRANNY SQUARE (US TERMINOLOGY)

### GRANNY SQUARE FRAME DIAGRAM

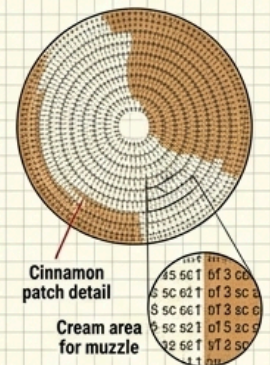


### 3D HEAD UNIT PATTERN & ASSEMBLY

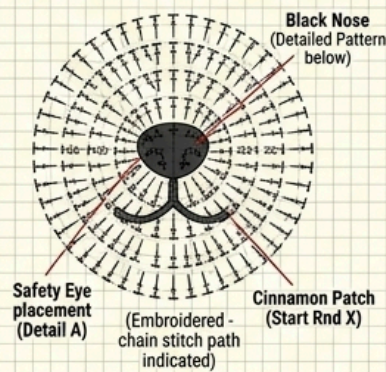
#### HEAD BASE (ROUND-BY-ROUND SCHEMATIC)



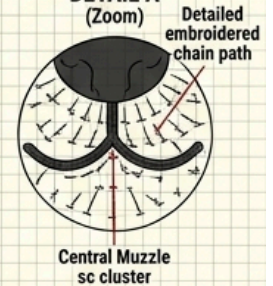
#### HEAD COLOR MAP (FULL CIRCLE)



#### MAGNIFIED MUZZLE PATTERN

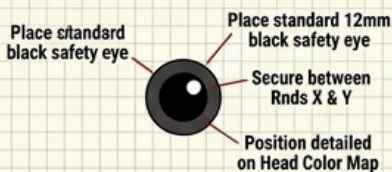


#### MUZZLE FACE DETAIL A (Zoom)

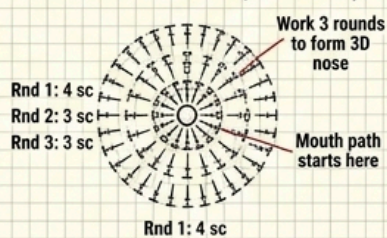


### ACCESSORY & FEATURE DETAILS

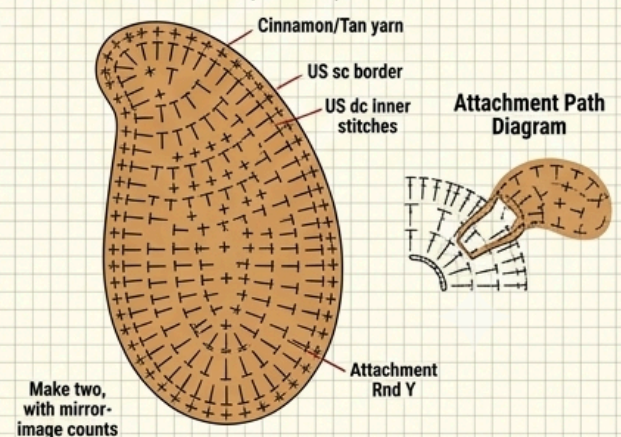
#### DETAIL A: SAFETY EYE PLACEMENT



#### BLACK NOSE PATTERN (FULL VIEW)



#### EAR UNIT PATTERN (Work 2x)



#### SYMBOL KEY

○ = ch, ch	‡ = tr	◊ = reverse sc (matrad)
s = sc, sc	⊙ = puff, puff	↘ = reverse sc (reverse sc)
T = hdc, inner stitches	• = sl st	⊗ = ch + border
‡ = dc, dc	↖ = reverse sc	+ = hdc, curren (+)
‡ = tr, ttr	⌒ = 80 st. - reverse sc	+ = sl st. reverse sc

- <https://handcrafted.craftsforlove.com/> SEE THE BEST PATTERNS

**Skill Level:** Intermediate

**Language:** US Crochet Terms

**Finished Shape:** Square

**Construction:** Worked from the center outward in sections

## Materials

- Worsted Weight (Category 4) yarn
  - Cream or White (main face color)
  - Light Brown or Beige (ears and outer border)
  - Black (eyes, nose, mouth)
- 4.0 mm (G/6) crochet hook
- Stitch markers
- Yarn needle
- Scissors

## Abbreviations

- ch = chain
- sl st = slip stitch
- sc = single crochet
- hdc = half double crochet
- dc = double crochet
- tr = treble crochet
- inc = increase (2 stitches in same stitch)
- dec = decrease
- MR = magic ring

## Notes Before You Start

- The square is worked in multiple sections.
- Read the entire tutorial before beginning.
- Stitch counts may vary slightly depending on yarn and tension.
- The ears are crocheted directly onto the head section.
- The eyes, nose, and mouth are added after the crochet work is complete.

## Step 1 – Create the Puppy Muzzle

The muzzle is the large circular section in the center.

Start with cream yarn.

Make a MR.

- <https://handcrafted.craftsforlove.com/> SEE THE BEST PATTERNS

Round 1:

- Ch 1.
- Work 12 dc into the MR.
- Join with sl st to first dc.
- (12 sts)

Round 2:

- Ch 2.
- Inc in every stitch around.
- Join with sl st.
- (24 sts)

Round 3:

- Ch 2.
- 1 dc in first stitch.
- Inc in next stitch.
- Repeat around.
- Join.
- (36 sts)

Round 4:

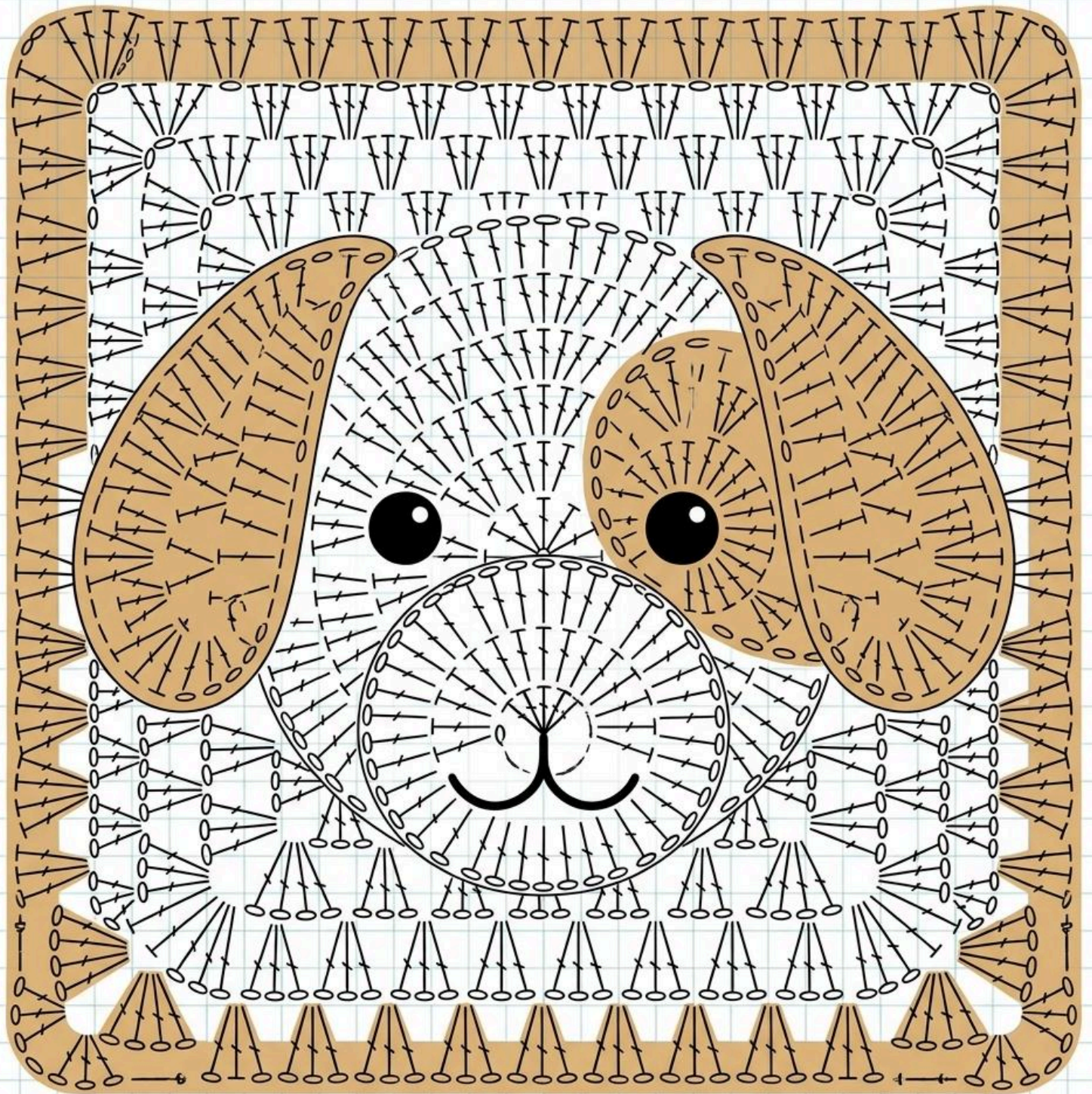
- Ch 2.
- Work 1 dc in next 2 stitches.
- Inc in next stitch.
- Repeat around.
- Join.
- (48 sts)

Round 5:

- Ch 2.
- Work 1 dc in next 3 stitches.
- Inc in next stitch.
- Repeat around.
- Join.
- (60 sts)

Fasten off, leaving a tail for sewing if desired.

- <https://handcrafted.craftsforlove.com/> SEE THE BEST PATTERNS



○ ch - sl st - sc † hdc † dc / tr † inc \ dec ○ magic ring

- <https://handcrafted.craftsforlove.com/> SEE THE BEST PATTERNS

## Step 2 – Crochet the Puppy Head Around the Muzzle

Attach cream yarn at the top center of the muzzle.

The chart shows the head worked around the muzzle using fan-shaped dc groups.

Round 1 Around Muzzle:

Work evenly around the muzzle:

- 2 dc in first space
- 1 dc in next stitch
- Repeat around

Add extra stitches near the top and side areas to create a rounded head shape.

Join with sl st.

Round 2:

Continue increasing evenly around.

- Work 1 dc in next 4 stitches
- Inc in next stitch

Repeat around.

The head should now be significantly larger than the muzzle.

## Step 3 – Shape the Puppy Cheeks

The chart shows expanded cheek sections on both sides.

Work short rows on the left side:

Row 1:

- Attach yarn at cheek area.
- Ch 2.
- Work 18 dc.
- Turn.

Row 2:

- Dec.
- Dc across.
- Dec.
- Turn.

- <https://handcrafted.craftsforlove.com/> SEE THE BEST PATTERNS

Row 3:

- Repeat Row 2.

Fasten off.

Repeat on opposite side.

This creates the rounded puppy cheeks visible in the chart.

## Step 4 – Create the Left Ear

Attach brown yarn at the upper-left side of the head.

The ear is worked in rows.

Row 1:

- Ch 2.
- Work 18 dc.
- Turn.

Row 2:

- Ch 2.
- Inc in first stitch.
- Dc across.
- Inc in last stitch.
- Turn.

Row 3:

- Ch 2.
- Dc across.

Row 4:

- Inc at beginning and end.

Rows 5–8:

- Continue increasing gradually until the ear reaches the size shown in the chart.

Rows 9–12:

- Work even.

Rows 13–16:

- Begin shaping:

- <https://handcrafted.craftsforlove.com/> SEE THE BEST PATTERNS

- Dec at beginning.
- Dc across.
- Dec at end.

Continue until a rounded ear shape is formed.

Fasten off.

## **Step 5 – Create the Right Ear**

Attach brown yarn at the upper-right side of the head.

Repeat the same instructions as the left ear.

Make sure both ears are symmetrical.

## **Step 6 – Fill the Space Between Ears**

The chart shows rows of dc fans connecting the ears and the head.

Attach cream yarn.

Work rows of dc clusters across the top:

- Ch 2.
- 3 dc fan.
- Skip space.
- 3 dc fan.

Continue across.

Add enough rows to fill the upper head section completely.

Fasten off.

## **Step 7 – Build the Lower Face Area**

Attach cream yarn at the lower side of the muzzle.

Work vertical rows downward following the chart.

Row 1:

- Ch 2.
- Dc evenly across lower muzzle edge.

Rows 2–8:

- <https://handcrafted.craftsforlove.com/> SEE THE BEST PATTERNS

- Continue working dc rows.

Increase slightly near corners to maintain a smooth shape.

The lower face should reach the level shown in the diagram.

## Step 8 – Fill Side Sections

The chart contains several vertical fan sections beside the cheeks.

Attach cream yarn.

Work groups of:

- 1 dc
- 1 dc
- 1 dc

into each available space.

Continue adding rows until all open areas beside the muzzle are filled.

Repeat on both sides.

## Step 9 – Square the Design

Attach cream yarn at any outer corner.

Begin converting the circular puppy shape into a square.

Round 1:

Work around entire piece:

- Dc evenly along sides.
- At each corner:
  - 2 dc
  - ch 2
  - 2 dc

Continue around.

Join with sl st.

Round 2:

Work:

- dc in every stitch

- <https://handcrafted.craftsforlove.com/> SEE THE BEST PATTERNS

- corners:
  - 2 dc
  - ch 2
  - 2 dc

Join.

The square shape should now be clearly visible.

## Step 10 – Add the Brown Border

Attach brown yarn.

Round 1:

Work dc around entire square.

Corners:

- 2 dc
- ch 2
- 2 dc

Join.

Round 2:

Continue around with dc stitches.

Maintain square corners.

Join.

Round 3:

Repeat.

The border should match the width shown in the chart.

## Step 11 – Add the Final Outer Round

Continue with brown yarn.

Work one final decorative round:

- dc in every stitch
- corners:
  - 2 dc
  - ch 2

- <https://handcrafted.craftsforlove.com/> SEE THE BEST PATTERNS

- 2 dc

Join and fasten off.

Weave in all ends.

## Step 12 – Make the Eyes 🗨️

Using black yarn:

Create two circles.

For each eye:

MR

Round 1:

- 8 sc in MR.

Round 2:

- Inc around.
- (16 sts)

Fasten off.

Sew onto the face exactly as shown in the chart.

Leave a small white highlight if desired using embroidery thread.

## Step 13 – Embroider the Nose ❤️

Using black yarn:

- Stitch a vertical oval nose in the center of the muzzle.
- Fill completely with satin stitches.

Position slightly above the middle of the muzzle.

## Step 14 – Embroider the Mouth 😊

Using black yarn:

- Create a short vertical line downward from the nose.
- Add two curved smile lines.
- Mirror both sides evenly.

This reproduces the expression shown in the chart.

- <https://handcrafted.craftsforlove.com/> SEE THE BEST PATTERNS

## Step 15 – Blocking the Square

Lightly wet block the finished square.

Pin:

- All four corners
- Ear tips
- Side edges

Allow to dry completely.

This helps the puppy square become perfectly even and professional-looking.

## Finished Puppy Granny Square 🐾🐾

You now have a crochet puppy granny square featuring:

- Large round muzzle
- Rounded puppy face
- Two floppy ears
- Embroidered nose and smile
- Square granny-style border
- Faithful appearance to the original chart

This square can be used for blankets, pillows, baby afghans, tote bags, wall hangings, or combined with other animal granny squares for a larger project. 🧶🐶✨