

Crochet Waistcoat Pattern

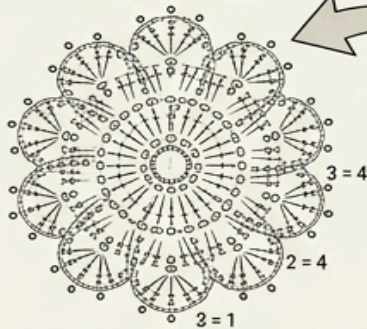
<https://handcrafted.craftsforlove.com/> SEE THE BEST PATTERNS

CROCHET WAISTCOAT: FULL SCHEMATIC & STITCH DIAGRAM (US TRADITIONAL STITCHES)

handcrafted.craftsforlove.com

handcrafted.craftsforlove.com

3D FLOWER MOTIF (DETAILED VIEW)



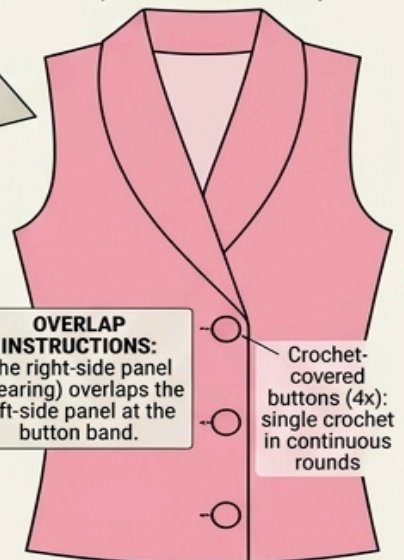
Petal Layer 1: ch, sc, (dc, tr, dc) cluster rep;
Petal Layer 2: ch, sc, (dc, tr, dc): rep;
Petal Layer 3: ch, sc, (dc, tr, rep);
Petal Layer 4: ch, sc, (dc, tr), etc.

COLLAR CONSTRUCTION DIAGRAM

Row 1 (from neckline),
Row 2, showing increasing dc clusters,
Row 3, showing increasing dc clusters,
Row 4: showing increasing dc clusters.



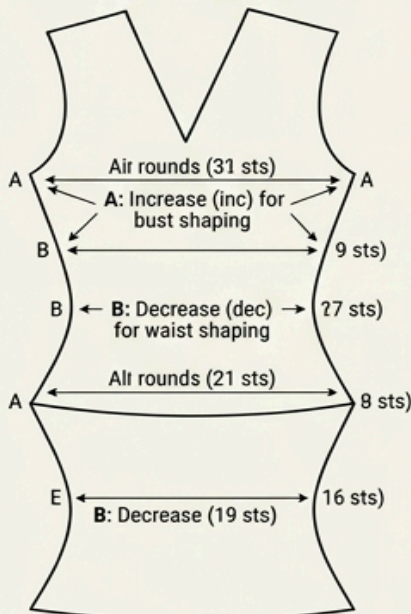
FRONT PANELS ASSEMBLY (FLATTENED VIEW)



OVERLAP INSTRUCTIONS:
 The right-side panel (wearing) overlaps the left-side panel at the button band.

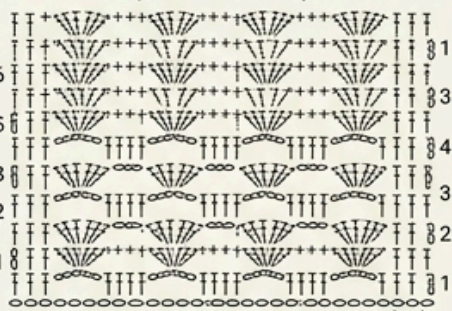
Crochet-covered buttons (4x): single crochet in continuous rounds

WAIST SHAPING SCHEMATIC



WAIST SHAPING SCHEMATIC

MAIN BODY PANEL STITCH DETAIL (US SYMBOLS)



Round 1: [sc, ch-3, skip 2, sc] repeat;
Round 2: [dc, ch-2, skip 2, dc] repeat;
Round 3: [shell-cluster: 3dc in ch-2 sp, ch-1] repeat.

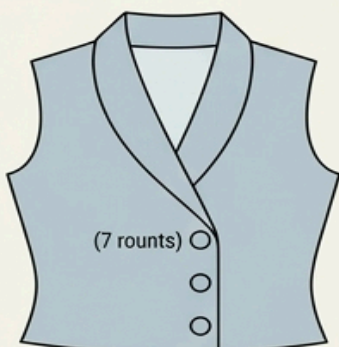
FRONT PANELS ASSEMBLY (FLATTENED VIEW)



YELLOW VARIANT LAYOUT SCHEMATIC

handcrafted.craftsforlove.com

handcrafted.craftsforlove.com



VARIANT LAYOUT SCHEMATIC

handcrafted.craftsforlove.com



BLUE VARIANT LAYOUT SCHEMATIC

handcrafted.craftsforlove.com



RED VARIANT LAYOUT SCHEMATIC

handcrafted.craftsforlove.com

US STITCH SYMBOL & ABBREVIATION KEY: ch=chain, sc=single crochet, hdc=half double crochet, dc=double crochet, tr=treble croch, crochet, sl st=slip stitch, picot, st=slip stitch, picot, cluster.



Materials & Tools

- Medium weight yarn (Category 4 / worsted weight)
- Crochet hook: US size H/8 (5.0 mm)
- Yarn needle
- Stitch markers
- Scissors
- 4 buttons (for front closure)



Stitch Abbreviations (US Terms)

- ch = chain <https://handcrafted.craftsforlove.com/> SEE THE BEST PATTERNS
- sc = single crochet
- hdc = half double crochet
- dc = double crochet
- tr = treble crochet
- sl st = slip stitch
- sp = space
- st(s) = stitch(es)
- inc = increase
- dec = decrease
- cluster = multiple stitches worked together



Overview of Construction

This waistcoat is made in **three main parts**:

1. Back panel (worked flat or in joined rounds)
2. Two front panels (worked separately)
3. Collar (added last)

You will also: <https://handcrafted.craftsforlove.com/> SEE THE BEST PATTERNS

- Shape the waist with increases and decreases
- Create a repeating shell/cluster stitch pattern
- Add optional 3D flower decoration 🌸



Step 1: Foundation Chain

1. Start by chaining a multiple of stitches needed to reach your bust width.
 - The diagram suggests approximately **31 stitches across for base shaping**.
2. Add 2–3 extra chains for turning.

Step 2: Main Body Stitch Pattern

You will repeat a **3-round stitch pattern**:

Round 1 <https://handcrafted.craftsforlove.com/> SEE THE BEST PATTERNS

- sc, ch 3, skip 2 sts, sc in next stitch
- Repeat across

Round 2

- dc, ch 2, skip 2 sts, dc in next stitch
- Repeat across

Round 3 (Shell Cluster Round)

- Work **3 dc in chain-2 space**, ch 1
- Repeat across

Repeat these 3 rounds continuously to build the fabric.

 This creates the textured shell pattern seen in the diagram.

Step 3: Waist Shaping

Follow this shaping structure carefully:

Upper Section (Bust Area)

- Work **increase rounds (inc)** gradually
- Adds fullness for bust shaping

Mid Section (Waist)


- Work **decrease rounds (dec)**
- Reduce stitches to create a fitted waist

Lower Section (Hip Area)

- Return to **even rounds or slight increases**

 Based on diagram: <https://handcrafted.craftsforlove.com/> SEE THE BEST PATTERNS

- Start: ~31 sts
- Waist reduction: down to ~21 sts
- Final shaping: ~19–27 sts depending on size

 Place stitch markers to track shaping points.

Step 4: Back Panel

1. Continue working in pattern until desired length
2. Shape armholes:
 - Skip stitches at both edges for several rows
3. Shape shoulders:
 - Gradually decrease stitches at top

Fasten off and set aside <https://handcrafted.craftsforlove.com/> **SEE THE BEST PATTERNS**

Step 5: Front Panels (Make 2)

Each front panel is worked separately.

Key Differences:

- One side will form the button band
- Neckline is shaped with decreases

Instructions:

1. Start same as back panel
2. Work stitch pattern
3. Shape armhole (same as back)
4. Shape neckline:
 - Decrease gradually on inner edge

Repeat for second panel (mirror image)

Step 6: Button Band

On one front panel: <https://handcrafted.craftsforlove.com/> **SEE THE BEST PATTERNS**

- Work **single crochet evenly along edge**
- Continue for several rows to form band

On the opposite panel:

- Add **buttonholes**:
 - ch 1 or ch 2, skip 1 stitch, continue pattern

Step 7: Assembly

1. Sew shoulder seams
2. Sew side seams (leave armholes open)
3. Attach buttons to match buttonholes

 According to diagram: <https://handcrafted.craftsforlove.com/> SEE THE BEST PATTERNS


- Right panel overlaps left panel at button band

Step 8: Collar Construction

The collar is built directly onto the neckline.

Row-by-row:

- Row 1: sc along neckline
- Row 2: increase dc clusters
- Row 3: continue increasing clusters
- Row 4: repeat increases for wider collar

 This creates the folded lapel look.

Step 9: 3D Flower Motif (Optional)

Center:

- Work a small circle using sc stitches

Petal Layers:

Layer 1:

- ch, sc, (dc, tr, dc) cluster repeat

Layer 2: <https://handcrafted.craftsforlove.com/> SEE THE BEST PATTERNS

- Repeat with slightly taller stitches

Layer 3:

- Add more volume with tr stitches

Layer 4:

- Final decorative round

Sew flower onto front panel near collar

Step 10: Variations

You can customize: <https://handcrafted.craftsforlove.com/> SEE THE BEST PATTERNS

- 7 rounds → shorter vest
- 8 rounds → longer version
- Colors:
 - Pink (original)
 - Yellow 🌞
 - Blue 💙
 - Red ❤️

All use the same structure

Final Tips

- Always count stitches after shaping rows
- Block your finished vest for best shape
- Use soft yarn for comfort
- Adjust hook size if fabric is too tight/loose

<https://handcrafted.craftsforlove.com/> SEE THE BEST PATTERNS