

# CROCHET BLOUSE MANDALA PATTERN



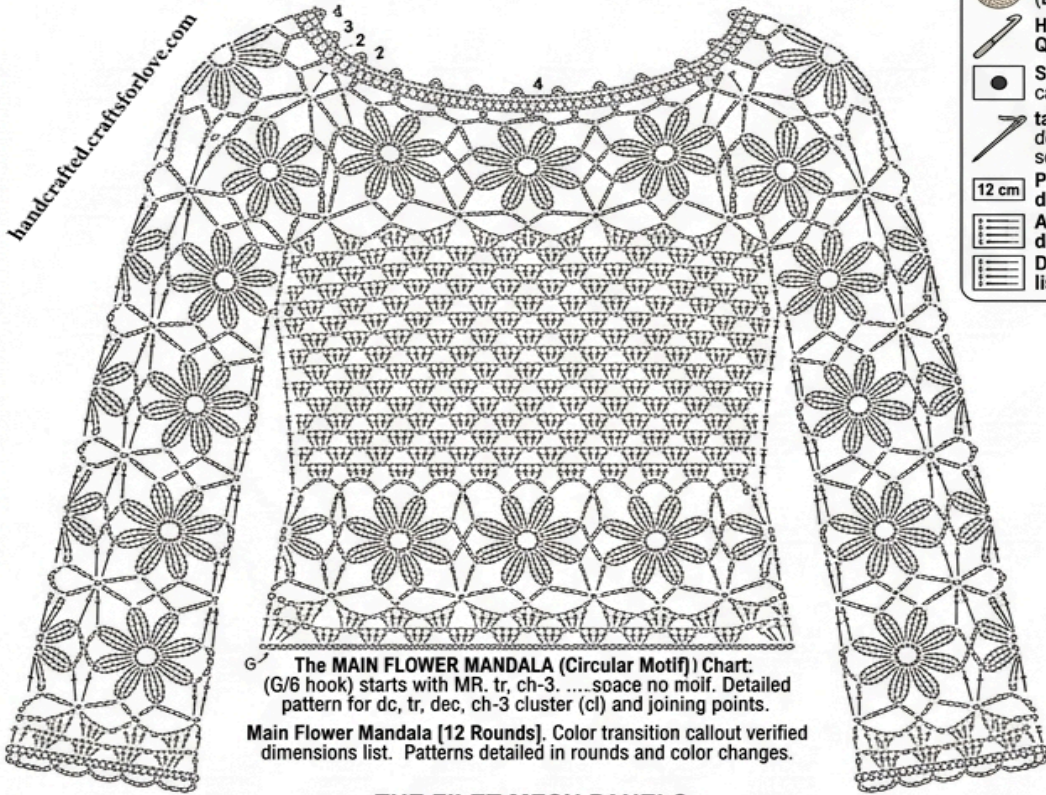
## Materials & Tools

- Cotton lace yarn (lightweight, category 1 – lace)
- Crochet hook: **G/6 (4.0 mm)**
- Optional: smaller hook (1.5 mm) for tighter joins if needed
- Tapestry needle (for weaving ends)
- Stitch markers
- Scissors <https://handcrafted.craftsforlove.com/> **SEE THE BEST PATTERNS**

## TECHNICAL CROCHET STITCH DIAGRAM: FLOWER MANDALA & FILET LACE BLUSA

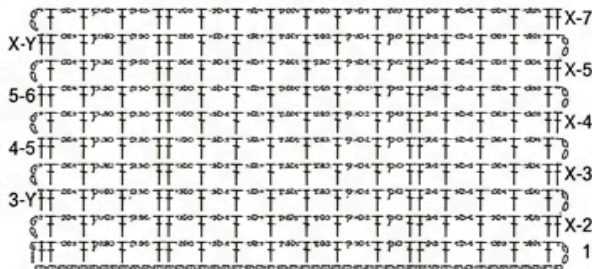
(US Terms)

handcrafted.craftsforlove.com



**The MAIN FLOWER MANDALA (Circular Motif) Chart:**  
(G/6 hook) starts with MR. tr, ch-3 .....soace no molf. Detailed pattern for dc, tr, dec, ch-3 cluster (cl) and joining points.  
**Main Flower Mandala [12 Rounds].** Color transition callout verified dimensions list. Patterns detailed in rounds and color changes.

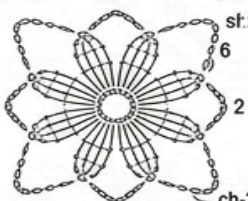
### THE FILET MESH PANELS



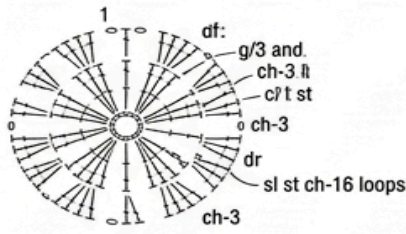
detailed pattern of dc-CH structure with callouts for correct item counts.

**Filet Mesh [Rnds X-Y].** Pattern detailed dimension verified against verify scale with IMAGE callout. Patterns detailed by rounds and color changes.  
handcrafted.craftsforlove.com

### SLEEVE FLOWER MOTIF

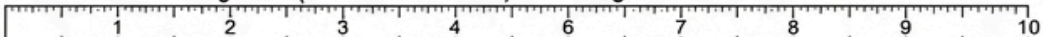


pattern detailed dimension verified. callouts for correct item counts.



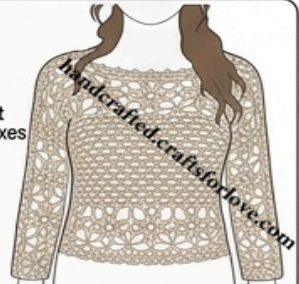
**Main Flower Mandala [12 Rounds].**

A un-fakeable Scaling Ruler (0-10 inches / 25 cm) verified against <IMAGE 0>



handcrafted.craftsforlove.com

Cotton Lace Yarn (Beige)  
 Hook: G/6 (4.0mm) & Q/T5mm  
 Safety Eye Placement callout un-fakeable boxes  
 tapestry needle detailed diagram of secure weaving  
 12 cm  
 Pattern detailed dimensions listed  
 All dimension lists dimension listed  
 Dimensions list lists listed dimension lists

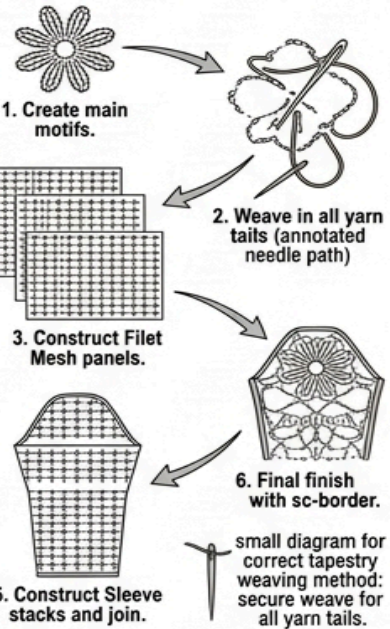


un-fakeable yellow box with sl st ch-16 loops

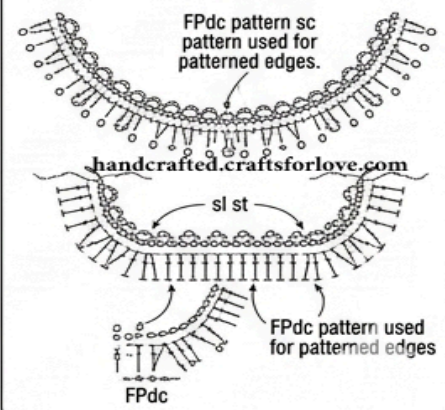
handcrafted.craftsforlove.com

## Assembly & Detailing Charts

### 1. ASSEMBLY FLOWCHART



### 2. NECKLINE & TRIM DETAILS





## Gauge & Notes

- This project uses **motifs + filet mesh panels**
- Measurements are based on motif count and assembly
- The diagram includes a **scaling ruler**—use it to verify your tension
- Work in **US crochet terminology**
- Main stitches used:
  - ch = chain <https://handcrafted.craftsforlove.com/> **SEE THE BEST PATTERNS**
  - sl st = slip stitch
  - sc = single crochet
  - dc = double crochet
  - tr = treble crochet
  - ch-3 cluster = cluster of 3 double crochets



## Step 1: Create the Main Flower Mandala (Make Multiple)

This is the **core motif** used across the blouse.

### Round 1 <https://handcrafted.craftsforlove.com/> **SEE THE BEST PATTERNS**

- Make a magic ring
- Ch 3 (counts as dc), work **15 dc into ring**
- Join with sl st (16 stitches total)

### Round 2

- Ch 3, dc in same st
- Ch 3, skip 1 st, 2 dc in next st
- Repeat around
- Join with sl st

### Round 3

- Sl st into ch-3 space
- Ch 3, 2 dc, ch 3, 3 dc in same space
- This creates a petal
- Repeat in each ch-3 space around

### Round 4–12 (Petal Expansion)

- Continue building petals:
  - Use combinations of **dc, tr, ch-3 spaces**
  - Each round increases spacing and petal definition
- Maintain symmetry: **16 petal points**
- Final round includes:

- Slip stitch loops (sl st + ch-16 loops indicated in diagram)
- These loops are used for joining motifs

👉 Make enough mandalas for:

- Front panel <https://handcrafted.craftsforlove.com/> SEE THE BEST PATTERNS
- Back panel
- Sleeves

(Typically 12–20 depending on size)

## 🌻 Step 2: Sleeve Flower Motif (Smaller Flowers)

### Round 1

- Magic ring
- Ch 3, 11 dc into ring
- Join

### Round 2

- Ch 2, create small loops:
  - Ch 6, sl st in next stitch
- Repeat around

### Round 3

- Work petals into loops:
  - (sc, dc, tr, dc, sc) in each loop

👉 Make multiple for sleeve structure

## 🧵 Step 3: Join Motifs (Join-As-You-Go Method)

- Use **slip stitch joins** through outer loops
- Align motifs edge-to-edge
- Join at:
  - Petal tips
  - Chain loop intersections

**Layout** <https://handcrafted.craftsforlove.com/> SEE THE BEST PATTERNS

- Arrange motifs in a grid:
  - Front: rectangular panel
  - Back: same as front
  - Sleeves: vertical motif alignment

## Step 4: Create Filet Mesh Panels

These panels fill the gaps between motifs.

### Structure

- Alternating:
  - **dc + ch spaces**
- Typical row:
  - Ch 3, dc in next st, ch 1, skip 1
- Repeat across

**Rows** <https://handcrafted.craftsforlove.com/> **SEE THE BEST PATTERNS**

- Build rows labeled X–Y in diagram
- Maintain consistent spacing
- Check alignment with motif edges

👉 Make panels for:

- Center front
- Center back

## Step 5: Assemble Body Panels

- Join:
  - Front motifs + filet mesh
  - Back motifs + filet mesh

### Seaming

- Use slip stitch or whip stitch
- Join shoulders first
- Then sides (leave armholes open)

## Step 6: Construct Sleeves

### Build Sleeve Panel

- Stack flower motifs vertically
- Add filet mesh if needed for shaping

**Join Sleeve** <https://handcrafted.craftsforlove.com/> **SEE THE BEST PATTERNS**

- Attach to armhole
- Work evenly around opening

## Step 7: Weave in Ends

- Use tapestry needle
- Follow yarn path invisibly
- Secure all joins

## Step 8: Neckline & Trim

### Neckline Round 1

- Attach yarn at neckline
- Work **sc evenly around**

### Decorative Edge <https://handcrafted.craftsforlove.com/> SEE THE BEST PATTERNS

- Use FPdc (front post double crochet)
- Add picot or loop edging:
  - (sc, ch 3, sl st in same st)

### Optional:

- Add structured edging with:
  - dc + chain loops for lace finish

## Step 9: Final Border

- Work around hem and cuffs
- Use:
  - sc base row
  - followed by decorative shell or picot

Example: <https://handcrafted.craftsforlove.com/> SEE THE BEST PATTERNS

- (sc, ch 3, skip 1) repeat

## Step 10: Fit & Adjustments

- Try on as you go
- Adjust:
  - Number of motifs
  - Length of filet mesh
  - Sleeve width



## **Final Tips** <https://handcrafted.craftsforlove.com/> **SEE THE BEST PATTERNS**

- Keep tension consistent for symmetry
- Block finished pieces for best shape
- Use stitch markers when joining motifs
- Count stitches at every round

<https://handcrafted.craftsforlove.com/> **SEE THE BEST PATTERNS**