

CROCHET TUTORIAL: THE SEA TURTLE CHAIR ARMREST CADDY & PLUSH SET

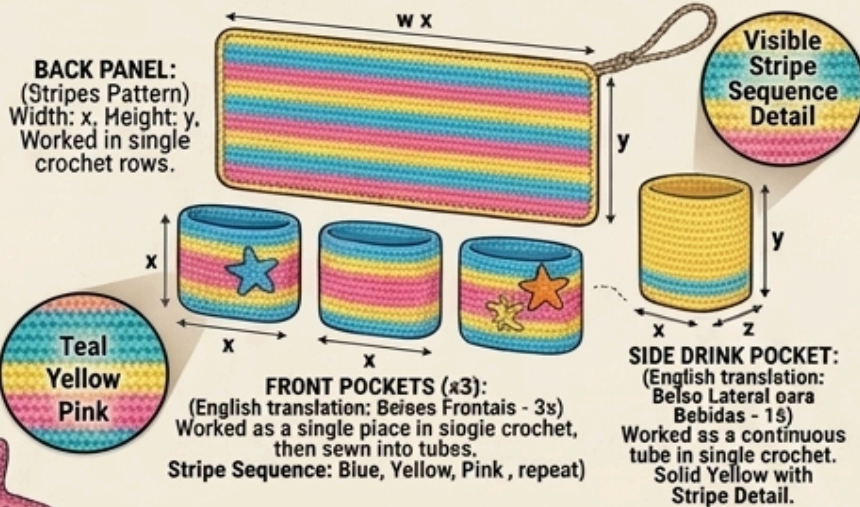
Complete Tutorial: Armrest Caddy and Turtle Plush Set

Translate all instructions and text from original image 25 provided photo. This detailed, single image contains everything needed to make the entire set. (Finished product reference inset)



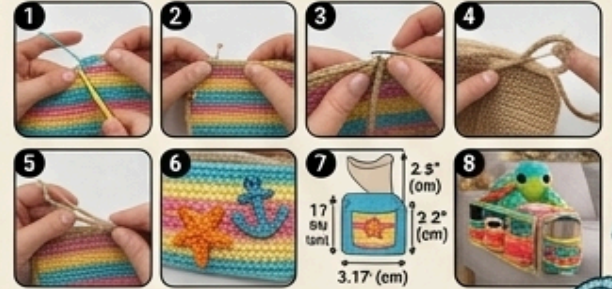
1. The Armrest Caddy (Portuguese: Organizador de Braço de Sofá)

Construction Layout (Putting it Together)



Assembly for and title

1. Complete main back panel and pocket pieces.
2. Fold and sew front pockets to panel.
3. Attach side pocket with robust seame.
4. Fold top of panel and use robust twine as a loop (e.g., natural jute or colorful cotton)



2. The Plush Turtle (Portuguese: Pelúcia Tartaruga de Crochet)

Pattern Guide: Round-by-Round Breakdown

Rnd 1: Magic ring, 6 sc (6)

Rnd 2: Inc in each sc (12)

Round 3-6 (Increases):

Rnd 2: (sc 1, inc) x6 (16)

Rnd 3: (sc 1, inc) x6 (18)

Rnd 3: (sc 1, inc) x6 (28)

Rnd 4: (sc 1, inc) sc (sc (28)

Rnd 5: (sc 1, inc) x6 (24)

Rnd 6: (sc 1, inc) sc (17)

Rnd 7: (sc 1, inc) x6 (18)

Head detailing: (Eyes from original image 25; detailed placement and thread for smile).

Cheek detail (e.g., worked with a small hdc circle or pink blush technique)

Visual Stitch Guide:

Round 1 (6 sc in magic ring)

Round 2 (sc, inc., sc (9)

Round 3 (sc, inc, sc (12)

Round 5 (sc, inc., sc (18)

Shell, shell,

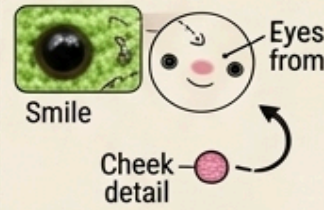
1 legs, legs, (6)

Rnd: (sc 1, inc) s6 (12)

Stufesç, flippers)



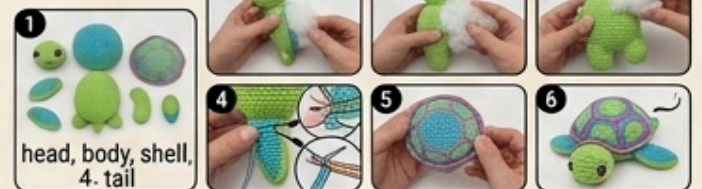
Head detailing:



Cheek detail:



Stuffing:



COMPLETE STITCH KEY & TECHNIQUE GUIDE

	ch	Chain		hdc (half-double crochet)	Half = double crochet in noicin made ing on the stitch. Drutirent and attiavn.
	sc (single crochet)	Single crochet is made 1 st in suniile crochet, worked in single crochet.		dc (double crochet)	Double crochet on a double crechet made in worked in the double crochet.
	inc	Increase (e.g., sc2 in 1 st)		sl st slip stitch)	Slip stitch is meve:nt (e.g., stitch in made.
	dec	Decrease (e.g., sc2 in 1 st)		Magic Ring	Detailed